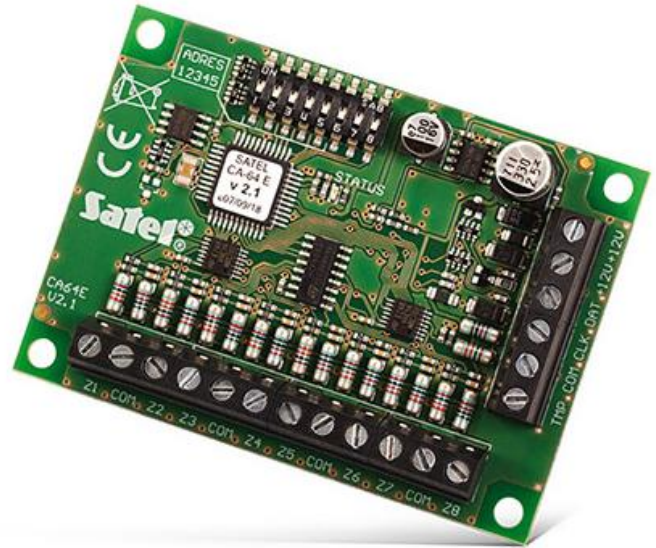


CA-64 E

ZONE EXPANSION MODULE

This module is dedicated for **INTEGRA** and **VERSA** control panels. It offers system extension with 8 wired inputs operating NO, NC, EOL and 2EOL configurations. Thanks to analysing the signals from inputs, it is possible to directly connect rollerblinds detectors and vibration detectors. The additional anti-sabotage input facilitates detection of unauthorised opening of the enclosure in which the module is fitted.

- system expansion with 8 zones
- support for NO, NC, EOL, 2EOL/NO, 2EOL/NC zone configurations
- programmable EOL resistance value
- pulse analysis with sensitivity setting for vibration and roller shutter sensors



TECHNICAL DATA

| | |
|--|--|
| Supply voltage | 12 V DC |
| Board dimensions | 80 x 57 mm |
| Operating temperature range | -10...+55 °C |
| Standby mode current consumption | 70 mA |
| Max. current consumption | 70 mA |
| Weight | 47 g |
| Maximum humidity | 93 ±3% |
| Environmental class according to EN50130-5 | II |
| Complied with standards | EN 50130-4, EN 50130-5, EN 50131-1, EN 50131-3 |
| Security grade according to EN50131-2-6 | Grade 3 |
| Number of programmable zones | 8 |

